

Catalog Number: 167486

General Information

Product name:

Anti-Phospho-Tau (Ser404) Rabbit antibody

Immunogen:

Applications:

WB, ICC/IF

Specificity:

Human, Mouse, Rat

Antibody description:

Phospho-Tau (Ser404) Rabbit polyclonal antibody

Properties

Preparation:

Antigen: A synthetic phosphopeptide corresponding to residues surrounding Ser404 of human Tau

Formulation:

Supplied in 50nM Tris-Glycine(pH 7.4), 0.15M NaCl, 40%Glycerol, 0.01% sodium azide and 0.05% BSA.

Storage:

Store at -20°C. Stable for 12 months from date of receipt.

Clonality:

Polyclonal

Ig Type:Rabbit IgG

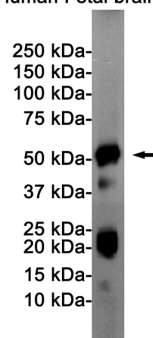
Applications

WB: 1/1000

ICC/IF: 1/20

Validations

Human Fetal brain



Western blot detection of Tau (Phospho-Ser404) in Human Fetal brain cell lysates using Tau (Phospho-Ser404) Rabbit pAb(1:1000 diluted).Predicted band size:79KDa.Observed band size:50-80KDa.