

Anti-Mib1/Mindbomb Rabbit antibody



Catalog Number: 167480

Product name

Anti-Mib1/Mindbomb Rabbit antibody

Specificity

Human, Mouse

Antibody description

Mib1/Mindbomb Rabbit polyclonal antibody

Preparation

Antigen: A synthetic peptide of human Mib1

Formulation

Supplied in 50nM Tris-Glycine(pH 7.4), 0.15M NaCl, 40%Glycerol, 0.01% sodium azide and 0.05% BSA.

Storage

Store at -20°C. Stable for 12 months from date of receipt.

Clonality

Polyclonal

Ig Type

Rabbit IgG

Applications

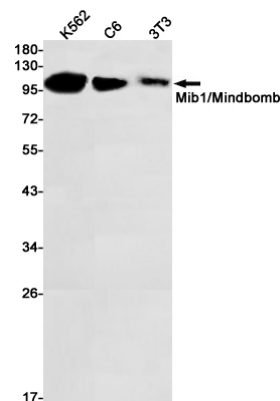
WB, ICC/IF

Dilutions

WB: 1/1000

ICC/IF: 1/50

Validations



Western blot detection of Mib1/Mindbomb in K562, Hela cell lysates using Mib1/Mindbomb Rabbit pAb(1:1000 diluted). Predicted band size: 110kDa. Observed band size: 110kDa.