

Anti-macroH2A.1 Rabbit antibody



Catalog Number: 167452

Product name

Anti-macroH2A.1 Rabbit antibody

Specificity

Human, Mouse, Rat

Antibody description

macroH2A.1 Rabbit polyclonal antibody

Preparation

Antigen: A synthetic peptide of human macroH2A.1

Formulation

Supplied in 50nM Tris-Glycine(pH 7.4), 0.15M NaCl, 40%Glycerol, 0.01% sodium azide and 0.05% BSA.

Storage

Store at -20°C. Stable for 12 months from date of receipt.

Clonality

Polyclonal

Ig Type

Rabbit IgG

Applications

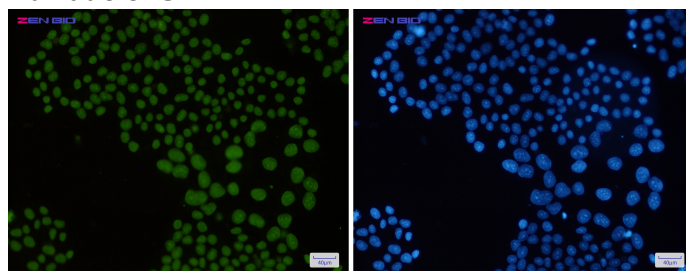
WB, ICC/IF

Dilutions

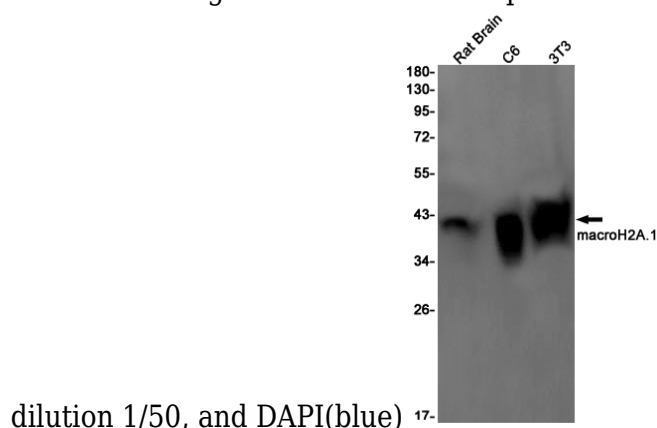
WB: 1/2000-1/10000

ICC/IF: 1/50

Validations



Immunocytochemistry of macroH2A.1 (green) in HeLa cells using macroH2A.1 Rabbit pAb at dilution 1/50, and DAPI (blue)



dilution 1/50, and DAPI (blue)

Western blot detection of macroH2A.1 in Rat Brain, C6, 3T3 cell lysates using macroH2A.1 Rabbit pAb(1:1000 diluted). Predicted band size: 40kDa. Observed band size: 40kDa.