

# Anti-MMP3 Rabbit antibody



Catalog Number: 167442

## Product name

Anti-MMP3 Rabbit antibody

WB: 1/1000-1/5000

IHC: 1/20

## Specificity

Human, Mouse, Rat

ICC/IF: 1/50

## Antibody description

MMP3 Rabbit polyclonal antibody

## Preparation

Antigen: A synthetic peptide of human MMP3

## Formulation

Supplied in 50nM Tris-Glycine(pH 7.4), 0.15M NaCl, 40%Glycerol, 0.01% sodium azide and 0.05% BSA.

## Storage

Store at -20°C. Stable for 12 months from date of receipt.

## Clonality

Polyclonal

## Ig Type

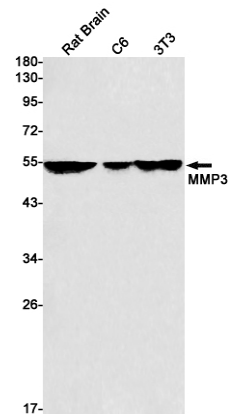
Rabbit IgG

## Applications

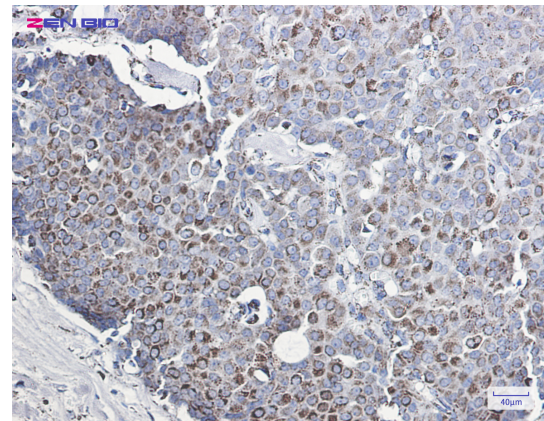
WB, IHC-P, ICC/IF

## Dilutions

## Validations



Western blot detection of MMP3 in Rat Brain, C6, 3T3 cell lysates using MMP3 Rabbit pAb(1:1000 diluted). Predicted band size: 54kDa. Observed band size: 54kDa.



Immunohistochemistry of MMP3 in paraffin-embedded Human breast cancer tissue using MMP3 Rabbit pAb at dilution 1/20