

# Anti-Cyclin E1 Rabbit antibody



Catalog Number: 167425

## Product name

Anti-Cyclin E1 Rabbit antibody

## Specificity

Human

## Antibody description

Cyclin E1 Rabbit polyclonal antibody

## Preparation

Antigen: A synthetic peptide of human Cyclin E1

## Formulation

Supplied in 50nM Tris-Glycine(pH 7.4), 0.15M NaCl, 40%Glycerol, 0.01% sodium azide and 0.05% BSA.

## Storage

Store at -20°C. Stable for 12 months from date of receipt.

## Clonality

Polyclonal

## Ig Type

Rabbit IgG

## Applications

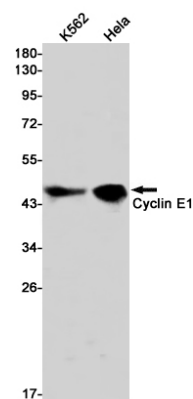
WB, ICC/IF

## Dilutions

WB: 1/1000-1/5000

ICC/IF: 1/50

## Validations



Western blot detection of Cyclin E1 in K562, HeLa cell lysates using Cyclin E1 Rabbit pAb(1:1000 diluted). Predicted band size: 47kDa. Observed band size: 47kDa.