

Anti-Mre11 Rabbit antibody



Catalog Number: 167408

Product name

Anti-Mre11 Rabbit antibody

Specificity

Human, Mouse, Rat

Antibody description

Mre11 Rabbit polyclonal antibody

Preparation

Antigen: Recombinant protein of human Mre11

Formulation

Supplied in 50nM Tris-Glycine(pH 7.4), 0.15M NaCl, 40%Glycerol, 0.01% sodium azide and 0.05% BSA.

Storage

Store at -20°C. Stable for 12 months from date of receipt.

Clonality

Polyclonal

Ig Type

Rabbit IgG

Applications

WB, IHC-P, FC

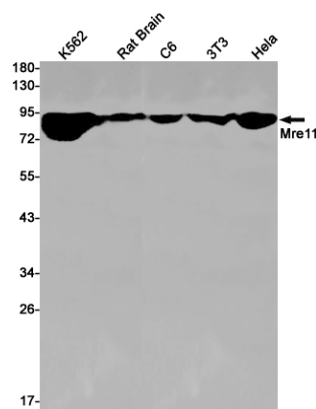
Dilutions

WB: 1/1000

IHC: 1/200

FC: 1/100

Validations



Western blot detection of Mre11 in K562, Rat Brain, C6, 3T3, HeLa cell lysates using Mre11 Rabbit pAb(1:1000 diluted). Predicted band size: 81kDa. Observed band size: 81kDa.