

# Anti-MCM7 Rabbit antibody



Catalog Number: 167398

## Product name

Anti-MCM7 Rabbit antibody

WB: 1/2000

IHC: 1/20

## Specificity

Human, Mouse, Rat

FC: 1/20

IP: 1/20

## Antibody description

MCM7 Rabbit polyclonal antibody

## Preparation

Antigen: A synthetic peptide of human MCM7

## Formulation

Supplied in 50nM Tris-Glycine(pH 7.4), 0.15M NaCl, 40%Glycerol, 0.01% sodium azide and 0.05% BSA.

## Storage

Store at -20°C. Stable for 12 months from date of receipt.

## Clonality

Polyclonal

## Ig Type

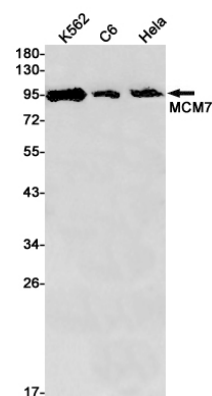
Rabbit IgG

## Applications

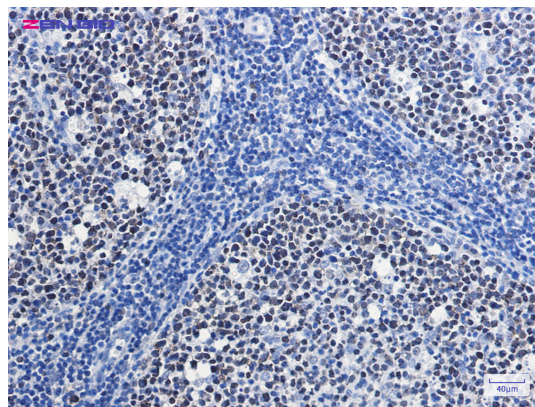
WB, IHC-P, FC, IP

## Dilutions

## Validations



Western blot detection of MCM7 in K562,C6,HeLa cell lysates using MCM7 Rabbit pAb(1:1000 diluted).Predicted band size:81kDa.Observed band size:81kDa.



Immunohistochemistry of MCM7 in paraffin-embedded Human tonsil using MCM7 Rabbit pAb at dilution 1/20