

Anti-NSE Rabbit antibody



Catalog Number: 167390

Product name

Anti-NSE Rabbit antibody

Specificity

Human, Mouse, Rat

Antibody description

NSE Rabbit polyclonal antibody

Preparation

Antigen: A synthesized peptide derived from human NSE

Formulation

Rabbit IgG in phosphate buffered saline , pH 7.4, 150mM NaCl, 0.02% sodium azide and 50% glycerol.

Storage

Store at 4°C short term. Store at -20°C long term. Avoid freeze / thaw cycle.

Clonality

Polyclonal

Ig Type

Rabbit IgG

Applications

WB, IHC-P, ICC/IF, FC

Dilutions

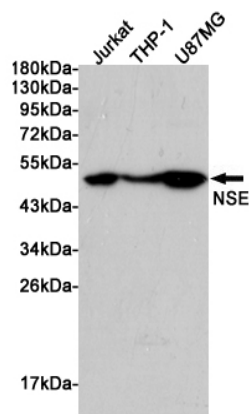
WB: 1/5000-1/10000

IHC: 1/50-1/200

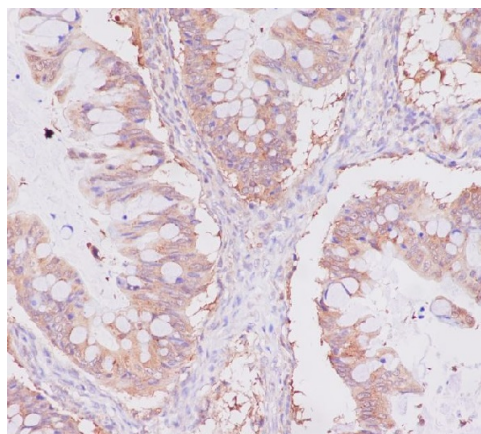
ICC/IF: 1/50-1/200

FC: 1/50

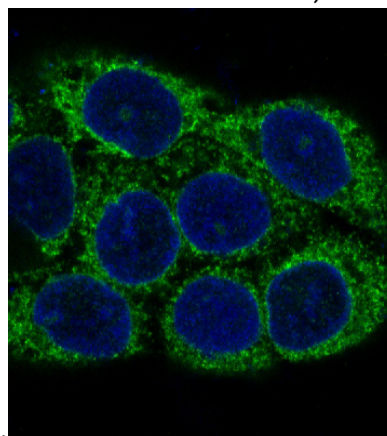
Validations



Western blot analysis of extracts from Jurkat, THP-1 and U87MG cells using NSE Rabbit pAb at 1:1000 dilution. Predicted band size: 47kDa. Observed band size: 47kDa.



Immunohistochemical analysis of paraffin-embedded human uterus cancer, using NSE



Antibody.

Immunofluorescent analysis of A431 cells, using

Anti-NSE Rabbit antibody



Catalog Number: 167390

Western blot analysis of NSE expression in HeLa cell lysate.

NSE Antibody.

