

# Anti-Src Rabbit antibody



Catalog Number: 167380

## Product name

Anti-Src Rabbit antibody

WB: 1/2000-1/10000

IHC: 1/50

## Specificity

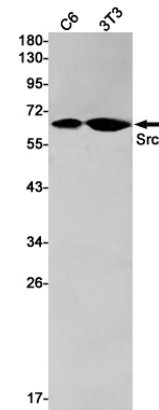
Human, Mouse, Rat

FC: 1/20

## Antibody description

Src Rabbit polyclonal antibody

## Validations



## Preparation

Antigen: A synthetic peptide of human Src

## Formulation

Supplied in 50nM Tris-Glycine(pH 7.4), 0.15M NaCl, 40%Glycerol, 0.01% sodium azide and 0.05% BSA.

## Storage

Store at -20°C. Stable for 12 months from date of receipt.

## Clonality

Polyclonal

## Ig Type

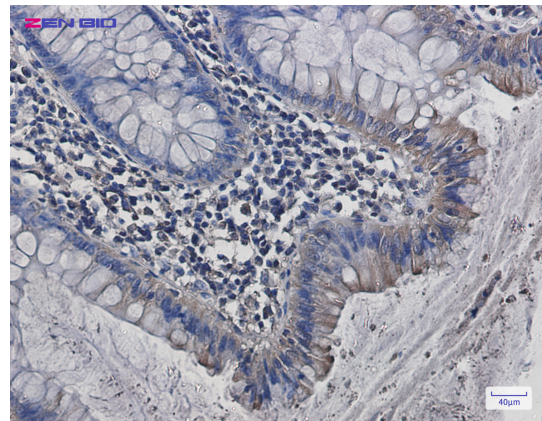
Rabbit IgG

## Applications

WB, IHC-P, FC

## Dilutions

Western blot detection of Src in C6,3T3 cell lysates using Src Rabbit pAb(1:1000 diluted).Predicted band size:60kDa.Observed band size:60kDa.



Immunohistochemistry of Src in paraffin-embedded Human colon cancer tissue using Src Rabbit pAb at dilution 1/50