

# Anti-IDH2 Rabbit antibody



Catalog Number: 167369

## Product name

Anti-IDH2 Rabbit antibody

## Specificity

Human, Mouse, Rat

## Antibody description

IDH2 Rabbit polyclonal antibody

## Preparation

Antigen: A synthetic peptide of human IDH2

## Formulation

Supplied in 50nM Tris-Glycine(pH 7.4), 0.15M NaCl, 40%Glycerol, 0.01% sodium azide and 0.05% BSA.

## Storage

Store at -20°C. Stable for 12 months from date of receipt.

## Clonality

Polyclonal

## Ig Type

Rabbit IgG

## Applications

WB, IHC-P, FC

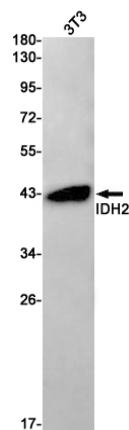
## Dilutions

WB: 1/1000

IHC: 1/50

FC: 1/200-1/1000

## Validations



Western blot detection of IDH2 in 3T3 cell lysates using IDH2 Rabbit pAb(1:1000 diluted).Predicted band size:51kDa.Observed band size:43kDa.