

Anti-SOX9 Rabbit antibody



Catalog Number: 167356

Product name

Anti-SOX9 Rabbit antibody

Specificity

Human, Mouse, Rat

Antibody description

SOX9 Rabbit polyclonal antibody

Preparation

Antigen: A synthesized peptide derived from human SOX9

Formulation

Rabbit IgG in phosphate buffered saline , pH 7.4, 150mM NaCl, 0.02% sodium azide and 50% glycerol.

Storage

Store at 4°C short term. Store at -20°C long term. Avoid freeze / thaw cycle.

Clonality

Polyclonal

Ig Type

Rabbit IgG

Applications

WB, IHC-P, ICC/IF, IP, FC

Dilutions

WB: 1/1000-1/2000

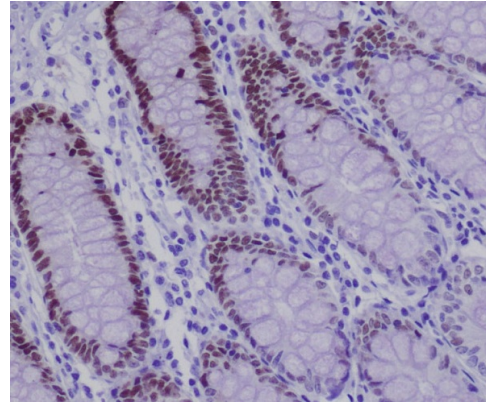
IHC: 1/100-1/500

ICC/IF: 1/50-1/200

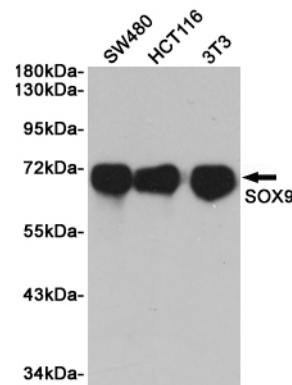
IP: 1/50

FC: 1/100

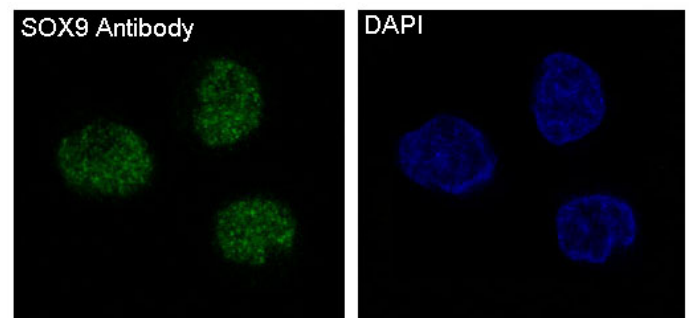
Validations



Immunohistochemical analysis of paraffin-embedded human colon, using SOX9 Antibody .



Western blot analysis of extracts from SW480, HCT116 and 3T3 cells using Sox9 Rabbit pAb at 1:1000 dilution. Predicted band size: 70kDa. Observed band size: 70kDa.



Immunofluorescent analysis of SW480 cells, using SOX9 Antibody .