

Anti-KCTD21 Rabbit antibody



Catalog Number: 167344

Product name

Anti-KCTD21 Rabbit antibody

Specificity

Human, Mouse, Rat

Antibody description

KCTD21 Rabbit polyclonal antibody

Preparation

Antigen: Recombinant protein of human KCTD21

Formulation

Supplied in 50nM Tris-Glycine(pH 7.4), 0.15M NaCl, 40%Glycerol, 0.01% sodium azide and 0.05% BSA.

Storage

Store at -20°C. Stable for 12 months from date of receipt.

Clonality

Polyclonal

Ig Type

Rabbit IgG

Applications

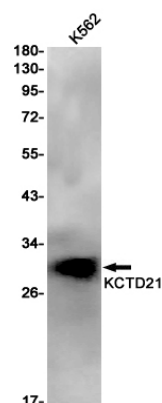
WB, FC

Dilutions

WB: 1/1000

FC: 1/50

Validations



Western blot detection of KCTD21 in K562 cell lysates using KCTD21 Rabbit pAb(1:1000 diluted).Predicted band size:30kDa.Observed band size:30kDa.