

# Anti-GPD2 Rabbit antibody



Catalog Number: 167341

## Product name

Rabbit IgG

Anti-GPD2 Rabbit antibody

## Applications

## Specificity

WB, FC, IP

Human, Mouse, Rat

## Dilutions

## Antibody description

WB: 1/1000

GPD2 Rabbit polyclonal antibody

FC: 1/50

## Preparation

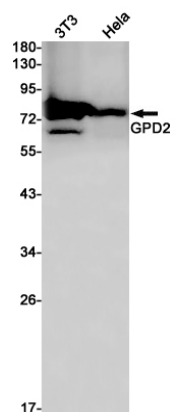
IP: 1/20

Antigen: A synthetic peptide of human GPD2

## Validations

## Formulation

Supplied in 50nM Tris-Glycine(pH 7.4), 0.15M NaCl, 40%Glycerol, 0.01% sodium azide and 0.05% BSA.



## Storage

Store at -20°C. Stable for 12 months from date of receipt.

## Clonality

Polyclonal

Western blot detection of GPD2 in K562, HeLa cell lysates using GPD2 Rabbit pAb(1:1000 diluted). Predicted band size: 81kDa. Observed band size: 81kDa.

## Ig Type