

Anti-RRAS Rabbit antibody



Catalog Number: 167340

Product name

Anti-RRAS Rabbit antibody

Specificity

Human

Antibody description

RRAS Rabbit polyclonal antibody

Preparation

Antigen: A synthetic peptide of human RRAS

Formulation

Supplied in 50nM Tris-Glycine(pH 7.4), 0.15M NaCl, 40%Glycerol, 0.01% sodium azide and 0.05% BSA.

Storage

Store at -20°C. Stable for 12 months from date of receipt.

Clonality

Polyclonal

Ig Type

Rabbit IgG

Applications

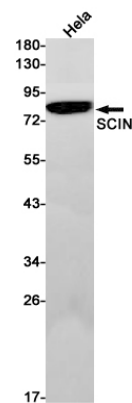
WB, FC

Dilutions

WB: 1/1000

FC: 1/50

Validations



Western blot detection of RRAS in HeLa cell lysates using RRAS Rabbit pAb(1:1000 diluted).Predicted band size:24kDa.Observed band size:24kDa.