

Anti-IKZF3 Rabbit antibody



Catalog Number: 167329

Product name

Anti-IKZF3 Rabbit antibody

Specificity

Human, Mouse, Rat

Antibody description

IKZF3 Rabbit polyclonal antibody

Preparation

Antigen: A synthetic peptide of human IKZF3

Formulation

Supplied in 50nM Tris-Glycine(pH 7.4), 0.15M NaCl, 40%Glycerol, 0.01% sodium azide and 0.05% BSA.

Storage

Store at -20°C. Stable for 12 months from date of receipt.

Clonality

Polyclonal

Ig Type

Rabbit IgG

Applications

WB, IHC-P, ICC/IF, FC

Dilutions

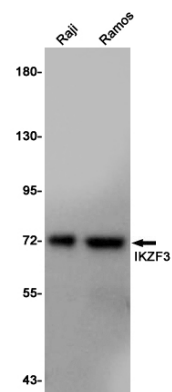
WB: 1/2000

IHC: 1/50

ICC/IF: 1/50

FC: 1/20

Validations



Western blot detection of IKZF3 in Raji,Ramos cell lysates using IKZF3 Rabbit pAb(1:1000 diluted).Predicted band size:58KDa.Observed band size:70KDa.