

Anti-Plastin L Rabbit antibody



Catalog Number: 167328

Product name

Anti-Plastin L Rabbit antibody

Specificity

Human

Antibody description

Plastin L Rabbit polyclonal antibody

Preparation

Antigen: A synthetic peptide of human Plastin L

Formulation

Supplied in 50nM Tris-Glycine(pH 7.4), 0.15M NaCl, 40%Glycerol, 0.01% sodium azide and 0.05% BSA.

Storage

Store at -20°C. Stable for 12 months from date of receipt.

Clonality

Polyclonal

Ig Type

Rabbit IgG

Applications

WB, IHC-P, ICC/IF, FC, IP

Dilutions

WB: 1/2000

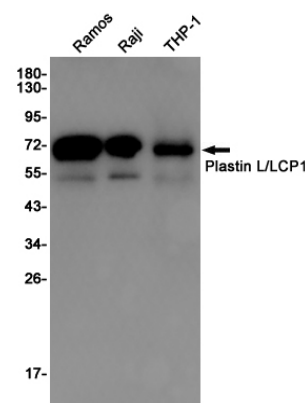
IHC: 1/50

ICC/IF: 1/100

FC: 1/20

IP: 1/20

Validations



Western blot detection of Plastin L/LCP1 in Ramos,Raji,THP1 cell lysates using Plastin L/LCP1 Rabbit pAb(1:1000 diluted).Predicted band size:70KDa.Observed band size:70KDa.