

Anti-CDT2/RAMP Rabbit antibody



Catalog Number: 167317

Product name

Anti-CDT2/RAMP Rabbit antibody

WB: 1/2000-1/10000

IHC: 1/20

Specificity

Human, Mouse, Rat

ICC/IF: 1/20

FC: 1/50

Antibody description

CDT2/RAMP Rabbit polyclonal antibody

Preparation

Antigen: Recombinant protein of human CDT2

Formulation

Supplied in 50nM Tris-Glycine(pH 7.4), 0.15M NaCl, 40%Glycerol, 0.01% sodium azide and 0.05% BSA.

Storage

Store at -20°C. Stable for 12 months from date of receipt.

Clonality

Polyclonal

Ig Type

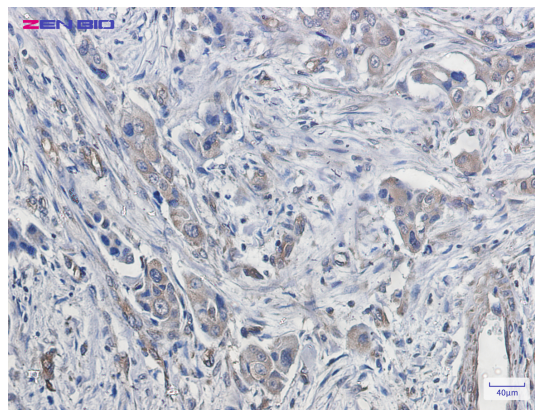
Rabbit IgG

Applications

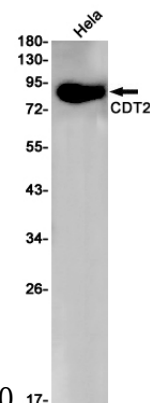
WB, IHC-P, ICC/IF, FC

Dilutions

Validations



Immunohistochemistry of CDT2 in paraffin-embedded Human lung cancer tissue using CDT2



Rabbit pAb at dilution 1/20

Western blot detection of CDT2 in HeLa cell lysates using CDT2 Rabbit pAb(1:1000 diluted). Predicted band size:80kDa.Observed band size:80kDa.