

Anti-IKK alpha Rabbit antibody



Catalog Number: 167300

Product name

Anti-IKK alpha Rabbit antibody

Specificity

Human, Mouse, Rat

Antibody description

IKK alpha Rabbit polyclonal antibody

Preparation

Antigen: A synthesized peptide derived from human IKK alpha

Formulation

Rabbit IgG in phosphate buffered saline , pH 7.4, 150mM NaCl, 0.02% sodium azide and 50% glycerol.

Storage

Store at 4°C short term. Store at -20°C long term. Avoid freeze / thaw cycle.

Clonality

Polyclonal

Ig Type

Rabbit IgG

Applications

WB, IHC-P, ICC/IF, IP, FC

Dilutions

WB: 1/5000-1/20000

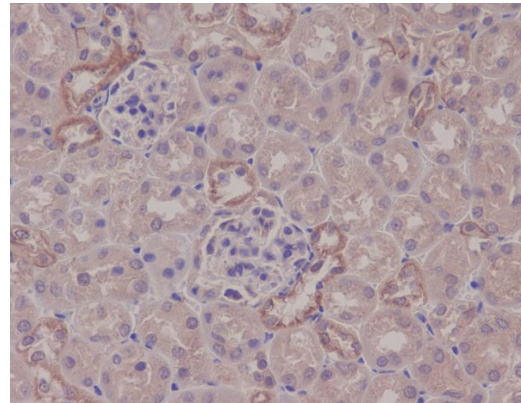
IHC: 1/50-1/200

ICC/IF: 1/50-1/200

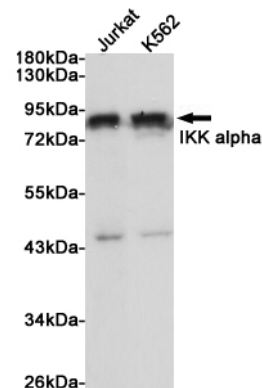
IP: 1/50

FC: 1/50

Validations

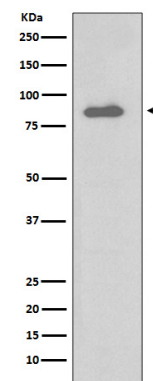


Immunohistochemical analysis of paraffin-embedded mouse kidney, using IKK alpha



Antibody.

Western blot analysis of extracts from Jurkat and K562 cells using IKK α Rabbit pAb at 1:1000 dilution. Predicted band size: 85kDa. Observed



band size: 85kDa.

Western blot analysis of IKK alpha expression in Daudi cell lysate.