

# Anti-Bak Rabbit antibody



Catalog Number: 167299

## Product name

Anti-Bak Rabbit antibody

1:50  
1:50

## Specificity

Human

## Antibody description

Bak Rabbit polyclonal antibody

## Preparation

Antigen: A synthesized peptide derived from human Bak

## Formulation

Rabbit IgG in phosphate buffered saline , pH 7.4, 150mM NaCl, 0.02% sodium azide and 50% glycerol.

## Storage

Store at +4°C short term. Store at -20°C long term. Avoid freeze / thaw cycle.

## Clonality

Polyclonal

## Ig Type

Rabbit IgG

## Applications

WB, IHC-P, ICC/IF, IP, FC

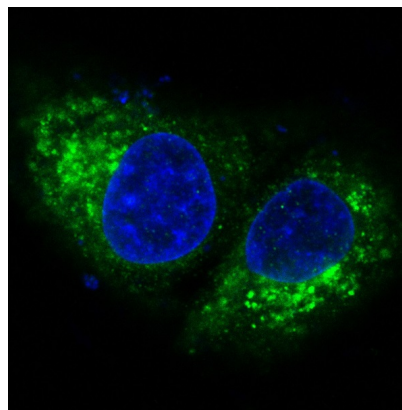
## Dilutions

1:500~1:2000

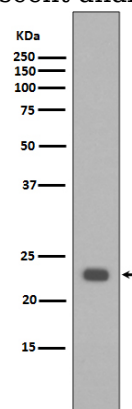
1:50~1:200

1:50~1:200

## Validations

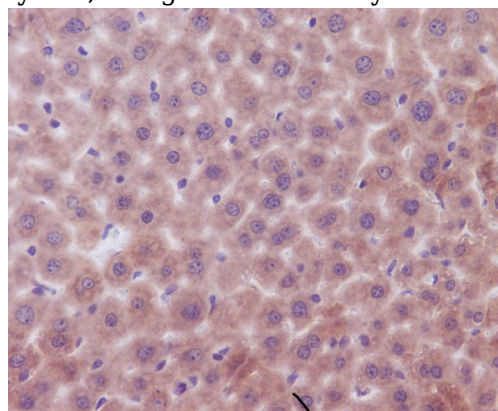


Immunofluorescent analysis of HeLa cells, using



Bak Antibody .

Western blot analysis of extracts of HeLa cell lysate, using BAK1 antibody.



Immunohistochemical analysis of paraffin-embedded mouse liver, using Bak Antibody.