

# Anti-alpha Smooth Muscle Actin Rabbit antibody



Catalog Number: 167296

## Product name

Anti-alpha Smooth Muscle Actin Rabbit antibody

## Specificity

Human, Mouse, Rat

## Antibody description

alpha Smooth Muscle Actin Rabbit polyclonal antibody

## Preparation

Antigen: A synthesized peptide derived from human alpha smooth muscle Actin

## Formulation

Rabbit IgG in phosphate buffered saline , pH 7.4, 150mM NaCl, 0.02% sodium azide and 50% glycerol.

## Storage

Store at 4°C short term. Store at -20°C long term. Avoid freeze / thaw cycle.

## Clonality

Polyclonal

## Ig Type

Rabbit IgG

## Applications

WB, IHC-P, ICC/IF, FC

## Dilutions

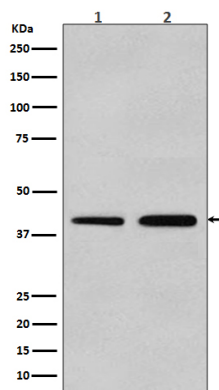
WB: 1/1000-1/10000

IHC: 1/50-1/200

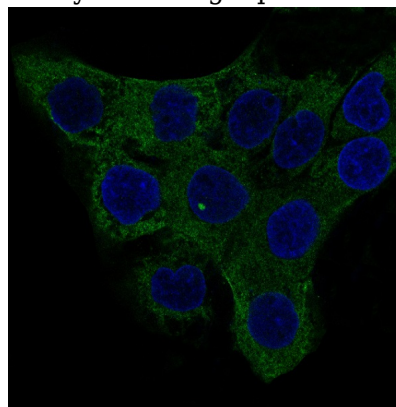
ICC/IF: 1/50-1/200

FC: 1/20

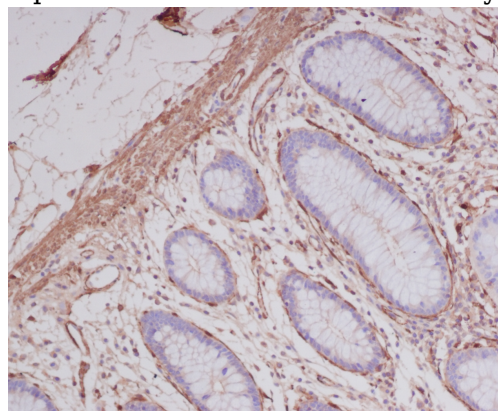
## Validations



Western blot analysis of alpha smooth muscle Actin expression in (1) A549 cell lysate; (2) C2C12 cell lysate using alpha-SMA antibody.



Immunofluorescent analysis of A431 cells, using alpha smooth muscle Actin Antibody .



Immunohistochemical analysis of paraffin-embedded human colon, using alpha smooth muscle Actin Antibody.