

# Anti-Histone H3 Rabbit antibody



Catalog Number: 167292

## Product name

Anti-Histone H3 Rabbit antibody

## Specificity

Human, Mouse, Rat

## Antibody description

Histone H3 Rabbit polyclonal antibody

## Preparation

Antigen: A synthesized peptide derived from human Histone H3

## Formulation

Rabbit IgG in phosphate buffered saline , pH 7.4, 150mM NaCl, 0.02% sodium azide and 50% glycerol.

## Storage

Store at 4°C short term. Store at -20°C long term. Avoid freeze / thaw cycle.

## Clonality

Polyclonal

## Ig Type

Rabbit IgG

## Applications

WB, IHC-P, ICC/IF, FC

## Dilutions

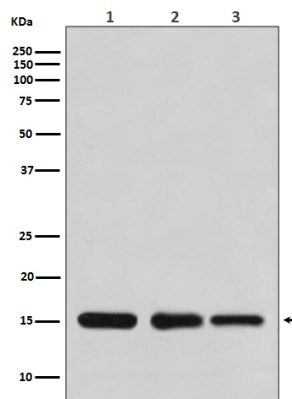
WB: 1/1000-1/2000

IHC: 1/50-1/200

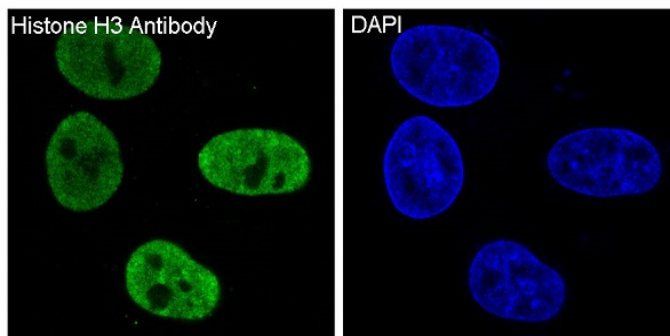
ICC/IF: 1/100-1/500

FC: 1/50

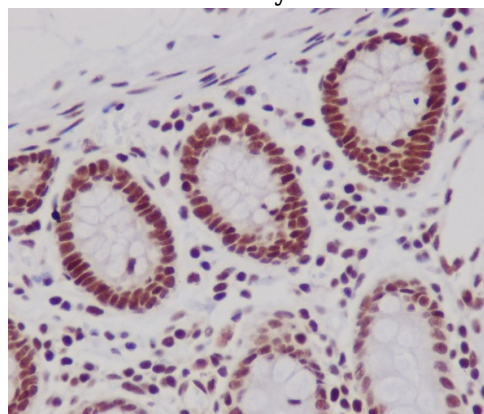
## Validations



Western blot analysis of Histone H3 expression in (1) HeLa cell lysate; (2) NIH/3T3 cell lysate; (3) Rat brain lysate.



Immunofluorescent analysis of HeLa cells, using Histone H3 Antibody.



Immunohistochemical analysis of paraffin-embedded human colon, using Histone H3 Antibody.