

# Anti-Rab5 Rabbit antibody

Catalog Number: 167287

## Product name

Anti-Rab5 Rabbit antibody

WB: 1/1000

IHC: 1/500

## Specificity

Human, Mouse, Rat

ICC/IF: 1/200

FC: 1/20

## Antibody description

Rab5 Rabbit polyclonal antibody

IP: 1/20

## Validations

## Preparation

Antigen: A synthetic peptide of human Rab5

## Formulation

Supplied in 50nM Tris-Glycine(pH 7.4), 0.15M NaCl, 40%Glycerol, 0.01% sodium azide and 0.05% BSA.

## Storage

Store at -20°C. Stable for 12 months from date of receipt.

## Clonality

Polyclonal

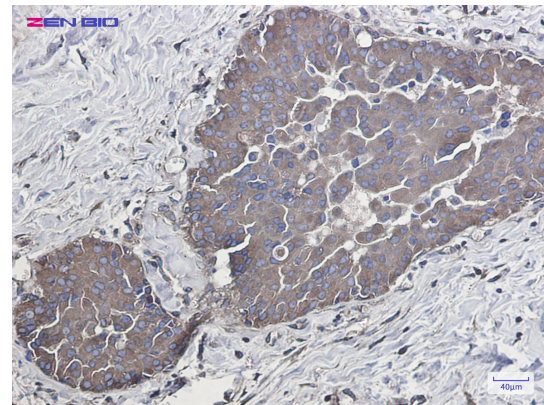
## Ig Type

Rabbit IgG

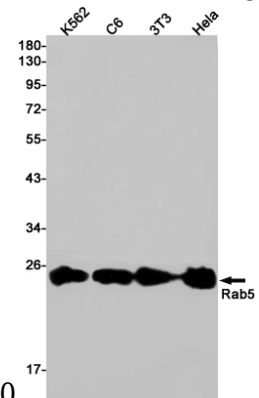
## Applications

WB, IHC-P, ICC/IF, FC, IP

## Dilutions



Immunohistochemistry of Rab5 in paraffin-embedded Human breast cancer tissue using Rab5



Rabbit pAb at dilution 1/50

Western blot detection of Rab5 in K562,C6,3T3,HeLa cell lysates using Rab5 Rabbit pAb(1:1000 diluted).Predicted band size:24kDa.Observed band size:24kDa.