

Anti-CD166 Rabbit antibody



Catalog Number: 167286

Product name

Anti-CD166 Rabbit antibody

IHC: 1/50

ICC/IF: 1/50

Specificity

Human, Mouse, Rat

FC: 1/20

IP: 1/20

Antibody description

CD166 Rabbit polyclonal antibody

Validations

Preparation

Antigen: A synthetic peptide of human CD166

Formulation

Supplied in 50nM Tris-Glycine(pH 7.4), 0.15M NaCl, 40%Glycerol, 0.01% sodium azide and 0.05% BSA.

Storage

Store at -20°C. Stable for 12 months from date of receipt.

Clonality

Polyclonal

Ig Type

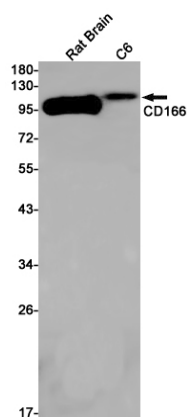
Rabbit IgG

Applications

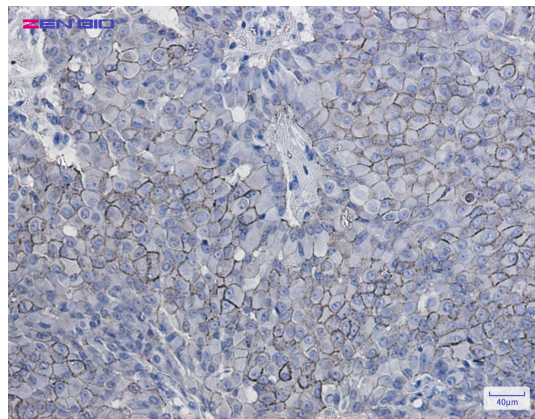
WB, IHC-P, ICC/IF, FC, IP

Dilutions

WB: 1/2000



Western blot detection of CD166 in Rat Brain, C6 cell lysates using CD166 Rabbit pAb(1:1000 diluted). Predicted band size: 65kDa. Observed band size: 105kDa.



Immunohistochemistry of CD166 in paraffin-embedded Human breast cancer tissue using CD166 Rabbit pAb at dilution 1/50