

Anti-Monoamine Oxidase A/MAOA Rabbit antibody



Catalog Number: 167279

Product name

Rabbit IgG

Anti-Monoamine Oxidase A/MAOA Rabbit antibody

Applications

Specificity

WB, IHC-P, ICC/IF, FC

Human, Mouse, Rat

Dilutions

Antibody description

WB: 1/1000

Monoamine Oxidase A/MAOA Rabbit polyclonal antibody

IHC: 1/20

ICC/IF: 1/20

Preparation

FC: 1/20

Antigen: A synthetic peptide of human Monoamine Oxidase A

Validations

Formulation

Supplied in 50nM Tris-Glycine(pH 7.4), 0.15M NaCl, 40%Glycerol, 0.01% sodium azide and 0.05% BSA.

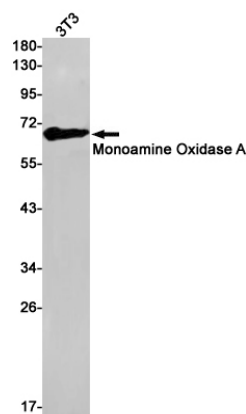
Storage

Store at -20°C. Stable for 12 months from date of receipt.

Clonality

Polyclonal

Ig Type



Western blot detection of Monoamine Oxidase A in C6 cell lysates using Monoamine Oxidase A Rabbit pAb(1:1000 diluted). Predicted band size:60kDa. Observed band size:60kDa.