

# Anti-GTPase HRAS Rabbit antibody



Catalog Number: 167262

## Product name

Rabbit IgG

Anti-GTPase HRAS Rabbit antibody

## Applications

## Specificity

WB, ICC/IF, FC, IP

Human, Mouse, Rat

## Dilutions

## Antibody description

WB: 1/1000

GTPase HRAS Rabbit polyclonal antibody

ICC/IF: 1/50

## Preparation

FC: 1/50

Antigen: Recombinant protein of human RAS

IP: 1/20

## Formulation

Supplied in 50nM Tris-Glycine(pH 7.4), 0.15M NaCl, 40%Glycerol, 0.01% sodium azide and 0.05% BSA.

## Validations

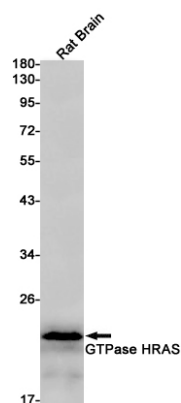
## Storage

Store at -20°C. Stable for 12 months from date of receipt.

## Clonality

Polyclonal

## Ig Type



Western blot detection of RAS in Rat Brain lysates using RAS Rabbit pAb(1:1000 diluted).Predicted band size:21kDa.Observed band size:21kDa.