

# Anti-PARP1 Rabbit antibody



Catalog Number: 167236

## Product name

Anti-PARP1 Rabbit antibody

WB: 1/2000

IHC: 1/20

## Specificity

Human, Mouse, Rat

FC: 1/20

## Antibody description

PARP1 Rabbit polyclonal antibody

## Preparation

Antigen: A synthetic peptide of human PARP

## Formulation

Supplied in 50nM Tris-Glycine(pH 7.4), 0.15M NaCl, 40%Glycerol, 0.01% sodium azide and 0.05% BSA.

## Storage

Store at -20°C. Stable for 12 months from date of receipt.

## Clonality

Polyclonal

## Ig Type

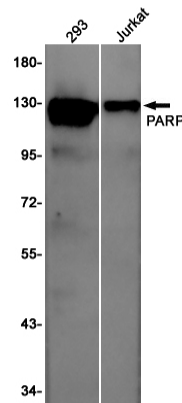
Rabbit IgG

## Applications

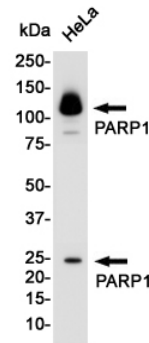
WB, IHC-P, FC

## Dilutions

## Validations



Western blot detection of PARP in 293, Jurkat cell lysates using PARP Rabbit pAb(1:1000 diluted). Predicted band size: 113KDa. Observed



band size: 116KDa.

Western blot detection of PARP in HeLa cell lysates using PARP Rabbit pAb(1:1000 diluted). Predicted band size: 113KDa. Observed band size: 116, 24KDa.