

Anti-CALD1 Rabbit antibody

Catalog Number: 167221

Product name

Anti-CALD1 Rabbit antibody

IHC: 1/20

ICC/IF: 1/50-1/200

Specificity

Human, Mouse, Rat

FC: 1/20

IP: 1/20

Antibody description

CALD1 Rabbit polyclonal antibody

Validations

Preparation

Antigen: A synthetic peptide of human Caldesmon

Formulation

Supplied in 50nM Tris-Glycine(pH 7.4), 0.15M NaCl, 40%Glycerol, 0.01% sodium azide and 0.05% BSA.

Storage

Store at -20°C. Stable for 12 months from date of receipt.

Clonality

Polyclonal

Ig Type

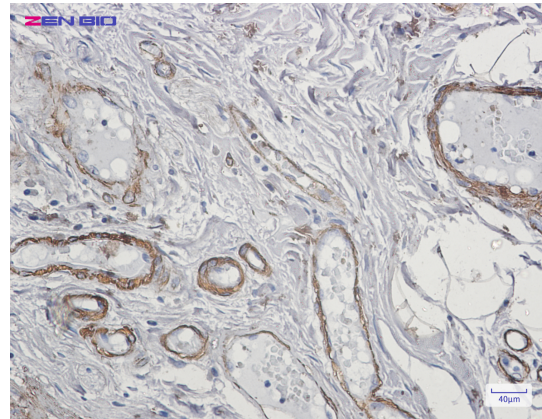
Rabbit IgG

Applications

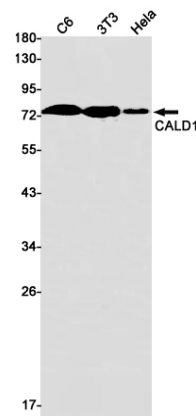
WB, IHC-P, ICC/IF, FC, IP

Dilutions

WB: 1/2000-1/10000



Immunohistochemistry of Caldesmon in paraffin-embedded Human colon cancer tissue using Caldesmon Rabbit pAb at dilution 1/20



Western blot detection of CALD1 in C6,3T3,HeLa cell lysates using CALD1 Rabbit pAb(1:1000 diluted).Predicted band size:93kDa.Observed band size:70-80kDa.