

Anti-Aldolase Rabbit antibody



Catalog Number: 167214

Product name

Anti-Aldolase Rabbit antibody

Specificity

Human, Mouse, Rat

Antibody description

Aldolase Rabbit polyclonal antibody

Preparation

Antigen: A synthetic peptide of human Aldolase

Formulation

Supplied in 50nM Tris-Glycine(pH 7.4), 0.15M NaCl, 40%Glycerol, 0.01% sodium azide and 0.05% BSA.

Storage

Store at -20°C. Stable for 12 months from date of receipt.

Clonality

Polyclonal

Ig Type

Rabbit IgG

Applications

WB, IHC-P, ICC/IF, FC

Dilutions

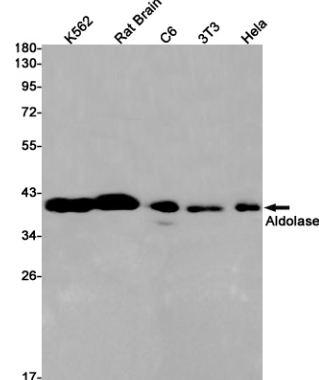
WB: 1/1000-1/5000

IHC: 1/20

ICC/IF: 1/20

FC: 1/50

Validations



Western blot detection of Aldolase in K562, Rat Brain, C6, 3T3, HeLa cell lysates using Aldolase Rabbit pAb(1:1000 diluted). Predicted band size: 39kDa. Observed band size: 39kDa.