

Anti-KMT6/EZH2 Rabbit antibody



Catalog Number: 167209

Product name

Anti-KMT6/EZH2 Rabbit antibody

Specificity

Human, Mouse, Rat

Antibody description

KMT6/EZH2 Rabbit polyclonal antibody

Preparation

Antigen: A synthetic peptide of human KMT6/EZH2

Formulation

Supplied in 50nM Tris-Glycine(pH 7.4), 0.15M NaCl, 40%Glycerol, 0.01% sodium azide and 0.05% BSA.

Storage

Store at -20°C. Stable for 12 months from date of receipt.

Clonality

Polyclonal

Ig Type

Rabbit IgG

Applications

WB, IHC-P, ICC/IF, FC

Dilutions

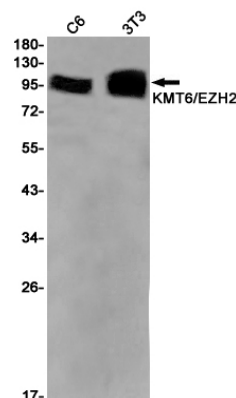
WB: 1/1000

IHC: 1/50

ICC/IF: 1/50

FC: 1/20

Validations



Western blot detection of KMT6/EZH2 in C6,3T3 cell lysates using KMT6/EZH2 Rabbit pAb(1:1000 diluted).Predicted band size:85kDa.Observed band size:98kDa.