

Anti-BTF3 Rabbit antibody



Catalog Number: 167204

Product name

Anti-BTF3 Rabbit antibody

IHC: 1/50

ICC/IF: 1/50

Specificity

Human, Mouse, Rat

FC: 1/50

IP: 1/20

Antibody description

BTF3 Rabbit polyclonal antibody

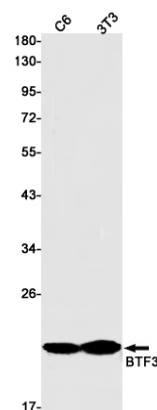
Validations

Preparation

Antigen: Recombinant protein of human BTF3

Formulation

Supplied in 50nM Tris-Glycine(pH 7.4), 0.15M NaCl, 40%Glycerol, 0.01% sodium azide and 0.05% BSA.



Storage

Store at -20°C. Stable for 12 months from date of receipt.

Western blot detection of BTF3 in C6,3T3 cell lysates using BTF3 Rabbit pAb(1:1000 diluted).Predicted band size:22kDa.Observed band size:22kDa.

Clonality

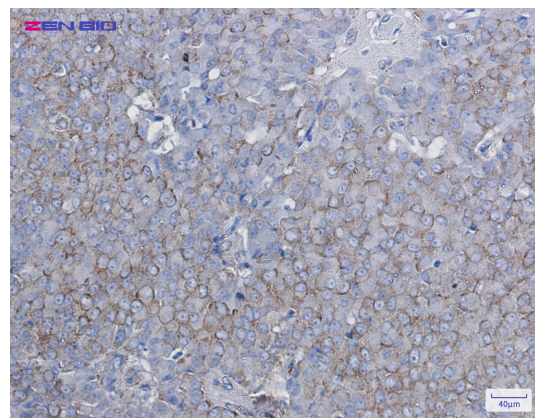
Polyclonal

Ig Type

Rabbit IgG

Applications

WB, IHC-P, ICC/IF, FC, IP



Dilutions

WB: 1/1000

Immunohistochemistry of BTF3 in paraffin-embedded Human breast cancer tissue using BTF3 Rabbit pAb at dilution 1/50