

Anti-PSD95 Rabbit antibody



Catalog Number: 167198

Product name

Anti-PSD95 Rabbit antibody

Specificity

Human, Mouse, Rat

Antibody description

PSD95 Rabbit polyclonal antibody

Preparation

Antigen: A synthesized peptide derived from human PSD95

Formulation

Rabbit IgG in phosphate buffered saline , pH 7.4, 150mM NaCl, 0.02% sodium azide and 50% glycerol.

Storage

Store at 4°C short term. Store at -20°C long term. Avoid freeze / thaw cycle.

Clonality

Polyclonal

Ig Type

Rabbit IgG

Applications

WB, IHC-P, ICC/IF, IP, FC

Dilutions

WB: 1/500-1/2000

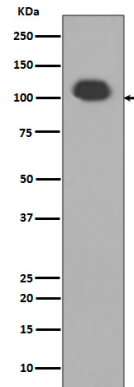
IHC: 1/50-1/200

ICC/IF: 1/50-1/200

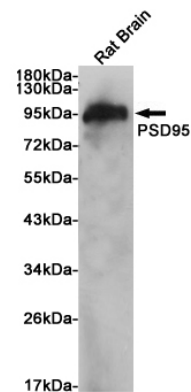
IP: 1/20

FC: 1/20

Validations



Western blot analysis of PSD95 expression in



Mouse brain tissue lysate.

Western blot analysis of extracts from rat brain using PSD95 Rabbit pAb at 1:1000 dilution. Predicted band size: 90kDa. Observed band size:



90kDa.

Immunofluorescent analysis of U87-MG cells, using PSD95 Antibody .