

# Anti-eIF5A Rabbit antibody

Catalog Number: 167192

## Product name

Anti-eIF5A Rabbit antibody

## Specificity

Human, Mouse, Rat

## Antibody description

eIF5A Rabbit polyclonal antibody

## Preparation

Antigen: A synthetic peptide of human eIF5A

## Formulation

Supplied in 50nM Tris-Glycine(pH 7.4), 0.15M NaCl, 40%Glycerol, 0.01% sodium azide and 0.05% BSA.

## Storage

Store at -20°C. Stable for 12 months from date of receipt.

## Clonality

Polyclonal

## Ig Type

Rabbit IgG

## Applications

WB, IHC-P, FC, IP

## Dilutions

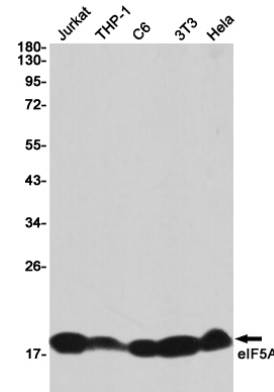
WB: 1/2000

IHC: 1/20

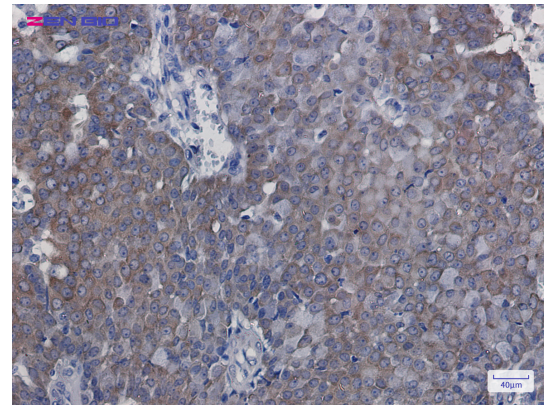
FC: 1/20

IP: 1/20

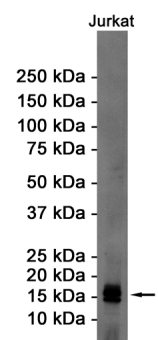
## Validations



Western blot detection of eIF5A in Jurkat, THP-1, C6, 3T3, HeLa cell lysates using eIF5A Rabbit pAb(1:1000 diluted). Predicted band size: 17KDa. Observed band size: 17KDa.



Immunohistochemistry of eIF5A in paraffin-embedded Human breast cancer tissue using



eIF5A Rabbit pAb at dilution 1/100

Western blot detection of eIF5A in Jurkat cell lysates using eIF5A Rabbit pAb(1:1000 diluted). Predicted band size: 17KDa. Observed band size: 17KDa.