

# Anti-DUSP1 Rabbit antibody



Catalog Number: 167190

## Product name

Anti-DUSP1 Rabbit antibody

WB: 1/500-1/2000

IHC: 1/50-1/200

## Specificity

Human, Mouse, Rat

ICC/IF: 1/50-1/200

IP: 1/50

FC: 1/50

## Antibody description

DUSP1 Rabbit polyclonal antibody

## Preparation

Antigen: A synthesized peptide derived from human DUSP1

## Formulation

Rabbit IgG in phosphate buffered saline , pH 7.4, 150mM NaCl, 0.02% sodium azide and 50% glycerol.

## Storage

Store at 4°C short term. Store at -20°C long term. Avoid freeze / thaw cycle.

## Clonality

Polyclonal

## Ig Type

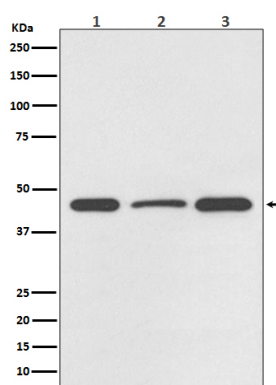
Rabbit IgG

## Applications

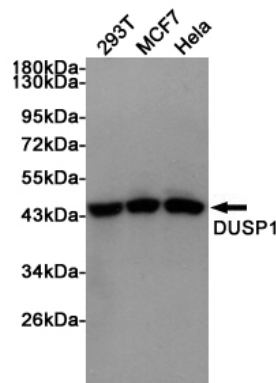
WB, IHC-P, ICC/IF, IP, FC

## Dilutions

## Validations



Western blot analysis of DUSP1 expression in (1) HeLa cell lysate; (2) NIH/3T3 cell lysate; (3) PC-12



cell lysate.

Western blot analysis of extracts from 293T, MCF7 and HeLa cells using DUSP1 rabbit pAb at 1:1000 dilution. Predicted band size: 40kDa. Observed band size: 40kDa.