

Anti-STAT1 Rabbit antibody



Catalog Number: 167183

Product name

Anti-STAT1 Rabbit antibody

Specificity

Human, Mouse

Antibody description

STAT1 Rabbit polyclonal antibody

Preparation

Antigen: Recombinant protein of human STAT1

Formulation

Supplied in 50nM Tris-Glycine(pH 7.4), 0.15M NaCl, 40%Glycerol, 0.01% sodium azide and 0.05% BSA.

Storage

Store at -20°C. Stable for 12 months from date of receipt.

Clonality

Polyclonal

Ig Type

Rabbit IgG

Applications

WB, ICC/IF, FC, IP

Dilutions

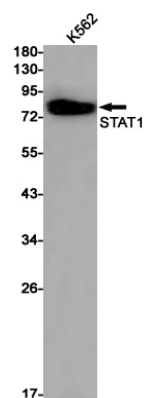
WB: 1/1000

ICC/IF: 1/20

FC: 1/100

IP: 1/20

Validations



Western blot detection of STAT1 in K562 cell lysates using STAT1 Rabbit pAb(1:1000 diluted). Predicted band size:87kDa. Observed band size:87kDa.