

Anti-Phospho-IKB alpha (Ser36) Rabbit antibody



Catalog Number: 167180

Product name

Anti-Phospho-IKB alpha (Ser36) Rabbit antibody

Specificity

Human, Mouse

Antibody description

Phospho-IKB alpha (Ser36) Rabbit polyclonal antibody

Preparation

Antigen: A synthetic phosphopeptide corresponding to residues surrounding Ser36 of human IKB alpha

Formulation

Supplied in 50nM Tris-Glycine(pH 7.4), 0.15M NaCl, 40%Glycerol, 0.01% sodium azide and 0.05% BSA.

Storage

Store at -20°C. Stable for 12 months from date of receipt.

Clonality

Polyclonal

Ig Type

Rabbit IgG

Applications

WB, ICC/IF, FC

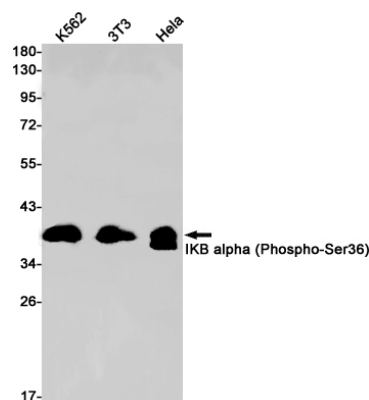
Dilutions

WB: 1/2000-1/10000

ICC/IF: 1/50

FC: 1/20

Validations



Western blot detection of IKB alpha (Phospho-Ser36) in K562,3T3,Hela cell lysates using IKB alpha (Phospho-Ser36) Rabbit pAb(1:1000 diluted).Predicted band size:36kDa.Observed band size:39kDa.