

Anti-Smad2/3 Rabbit antibody



Catalog Number: 167173

Product name

Anti-Smad2/3 Rabbit antibody

Specificity

Human, Mouse, Rat

Antibody description

Smad2/3 Rabbit polyclonal antibody

Preparation

Antigen: Recombinant protein of human Smad2

Formulation

Supplied in 50nM Tris-Glycine(pH 7.4), 0.15M NaCl, 40%Glycerol, 0.01% sodium azide and 0.05% BSA.

Storage

Store at -20°C. Stable for 12 months from date of receipt.

Clonality

Polyclonal

Ig Type

Rabbit IgG

Applications

WB, ICC/IF, FC, IP, ChIP

Dilutions

WB: 1/1000

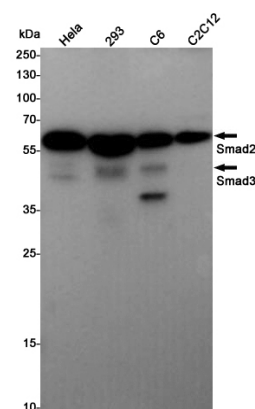
ICC/IF: 1/50

FC: 1/100

IP: 1/20

ChIP: 1/20

Validations



Western blot detection of Smad2/3 in HeLa,293,C6,C2C12 cell lysates using Smad2/3 Rabbit pAb(1:1000 diluted).Predicted band size:52,48KDa.Observed band size:52,60KDa.