

# Anti-beta-Catenin Rabbit antibody



Catalog Number: 167158

## Product name

Anti-beta-Catenin Rabbit antibody

WB::1:1000

## Specificity

Human, Mouse, Rat

## Antibody description

beta-Catenin Rabbit polyclonal antibody

## Preparation

Antigen: This CTNNB1 antibody is generated from a rabbit immunized with a KLH conjugated synthetic peptide between 736-749 amino acids from the C-terminal region of human CTNNB1.

## Formulation

Purified polyclonal antibody in PBS supplemented with 0.09% (W/V) sodium azide.

## Clonality

Polyclonal

## Ig Type

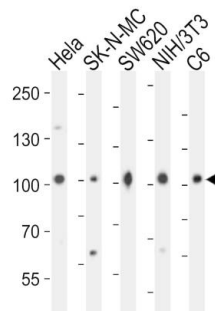
Rabbit Ig

## Applications

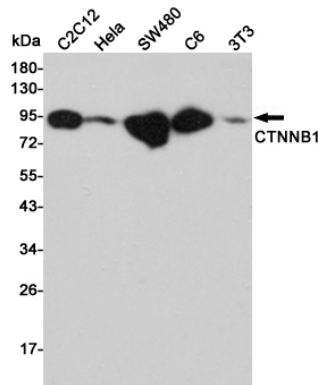
WB

## Dilutions

## Validations



Western blot analysis of lysates from HeLa, SK-N-MC, SW620, mouse NIH/3T3, rat C6 cell line (from left to right), using CTNNB1 Antibody (C-term)(Cat. #167158). 167158 was diluted at 1:1000 at each lane. A goat anti-rabbit IgG H&L(HRP) at 1:10000 dilution was used as the secondary antibody. Lysates at 20ug per lane.



Western blot analysis of CTNNB1 expression in C2C12, HeLa, SW480, C6 and 3T3 cell lysates using CTNNB1 antibody at 1/1000 dilution. Predicted band size: 92KDa. Observed band size: 92KDa.