

Anti-YAP1 Rabbit antibody

Catalog Number: 167154

Product name

Anti-YAP1 Rabbit antibody

Specificity

Human

Antibody description

YAP1 Rabbit polyclonal antibody

Preparation

Antigen: A synthesized peptide derived from human YAP1

Formulation

Rabbit IgG in phosphate buffered saline , pH 7.4, 150mM NaCl, 0.02% sodium azide and 50% glycerol.

Storage

Store at 4°C short term. Store at -20°C long term. Avoid freeze / thaw cycle.

Clonality

Polyclonal

Ig Type

Rabbit IgG

Applications

WB, IHC-P, ICC/IF, IP, FC

Dilutions

WB: 1/5000-1/10000

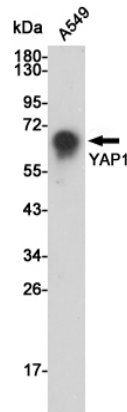
IHC: 1/50-1/100

ICC/IF: 1/50-1/100

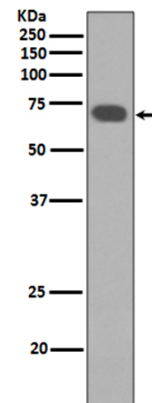
IP: 1/50

FC: 1/50

Validations

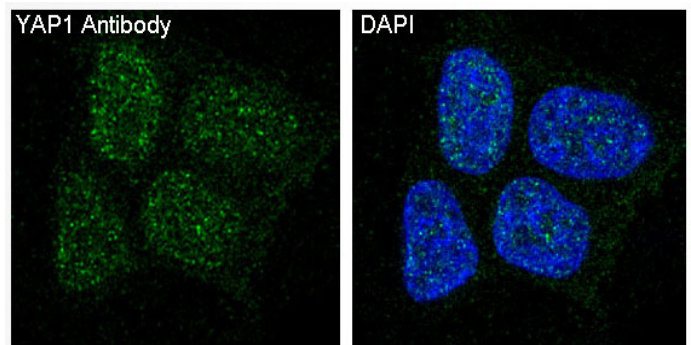


Western blot analysis of YAP1 expression in A549 cell lysates using YAP1 antibody at 1/500 dilution. Predicted band size: 65 kDa. Observed



band size: 65 kDa.

Western blot analysis of YAP expression in HeLa cell lysates.

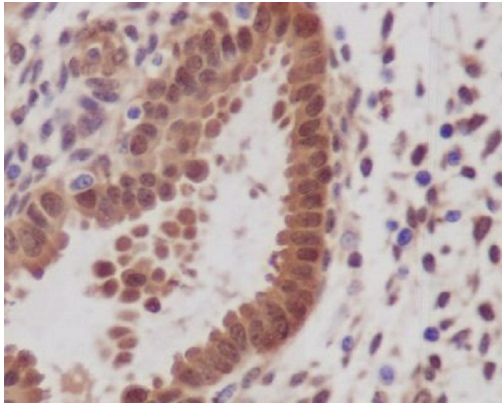


Immunofluorescent analysis of MCF7 cells, using YAP1 Antibody .

Anti-YAP1 Rabbit antibody



Catalog Number: 167154



Immunohistochemical analysis of paraffin-embedded human uterus, using YAP1 Antibody.