

Anti-GSK3 beta Rabbit antibody



Catalog Number: 167151

Product name

IgG

Anti-GSK3 beta Rabbit antibody

Applications

Specificity

ICC/IF, WB, IHC-P, IP, ELISA

Human, Mouse, Rat

Dilutions

Antibody description

IF: 1/50-200

GSK3 beta Rabbit polyclonal antibody

WB: 1/500 - 1/2000

Preparation

IHC: 1/100 - 1/300

Antigen: The antiserum was produced against synthesized peptide derived from human GSK3B. AA range:1-50

ELISA: 1/20000

Validations

Formulation

Liquid in PBS containing 50% glycerol, 0.5% BSA and 0.02% sodium azide.

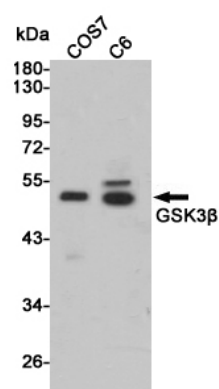
Storage

Store at 4°C short term. Store at -20°C long term. Avoid freeze / thaw cycle.

Clonality

Polyclonal

Ig Type



Western blot detection of GSK3u03b2 in COS7 and C6 cell lysates using GSK3u03b2 rabbit pAb (1:2000 diluted). Predicted band size:46kDa.Observed band size:46kDa.