

Anti-Phospho-AKT (Ser473) Rabbit antibody



Catalog Number: 167146

Product name

Anti-Phospho-AKT (Ser473) Rabbit antibody

Specificity

Human, Mouse, Rat

Antibody description

Phospho-AKT (Ser473) Rabbit polyclonal antibody

Preparation

Antigen: Peptide sequence around phosphorylation site of serine 473 (Q-F-S(p)-Y-S) derived from Human Akt.

Formulation

Supplied at 1.0mg/mL in phosphate buffered saline (without Mg²⁺ and Ca²⁺), pH 7.4, 150mM NaCl, 0.02% sodium azide and 50% glycerol.

Storage

Store at 4°C short term. Store at -20°C long term. Avoid freeze / thaw cycle.

Clonality

Polyclonal

Ig Type

IgG

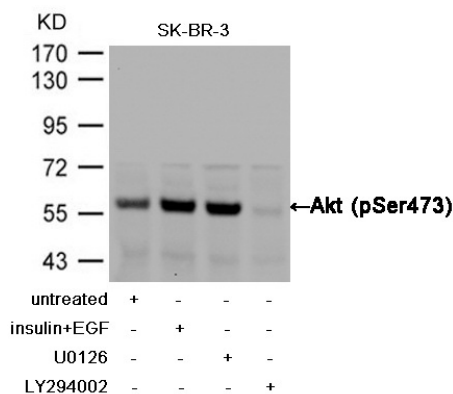
Applications

WB, IHC-P

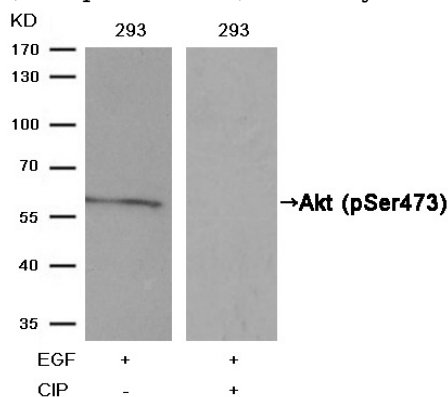
Dilutions

WB:1/500-1/1000 IHC:1/50-1/100

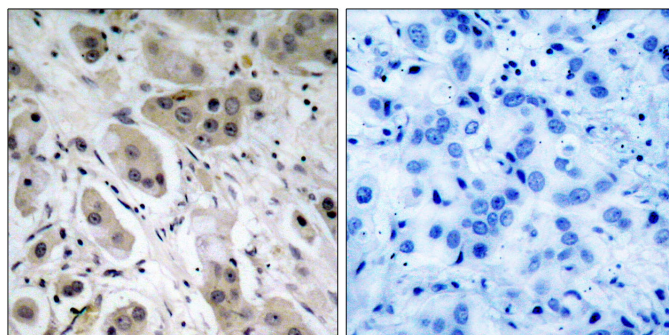
Validations



Western blot analysis of extracts from SK-BR-3 cells, treated with insulin and EGF, and pretreated with U0126 and LY294002 cells using Akt (Phospho-Ser473) Antibody .

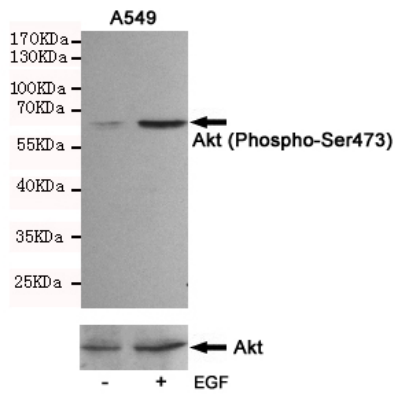


Western blot analysis of extracts from 293 cells, treated with EGF or calf intestinal phosphatase (CIP), using Akt (Phospho-Ser473) Antibody .



Immunohistochemical analysis of paraffin-embedded human breast carcinoma tissue using Akt (Phospho-Ser473) Antibody (left) or the same antibody preincubated with blocking peptide

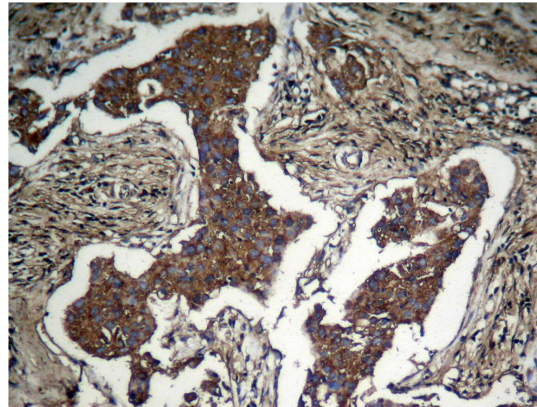
Catalog Number: 167146



(right).

Western blot analysis of extracts from A549 cells, untreated or treated with EGF(10ng/ml,10min), using Akt (Phospho-Ser473) Rabbit pAb (167146,1:500 diluted upper) and AKT(pan)

Mouse mAb (200323,lower).



Immunohistochemical analysis of paraffin-embedded human Lung carcinoma tissue using nAkt (Phospho-Ser473) Antibody .