

# Anti-Phospho-beta Catenin (Ser33) Rabbit antibody



Catalog Number: 167144

## Product name

Anti-Phospho-beta Catenin (Ser33) Rabbit antibody

## Specificity

Human, Mouse, Rat

## Antibody description

Phospho-beta Catenin (Ser33) Rabbit polyclonal antibody

## Preparation

Antigen: Peptide sequence around phosphorylation site of serine 33 (L-D-S(p)-G-I) derived from Human  $\beta$ -Catenin.

## Formulation

Supplied at 1.0mg/mL in phosphate buffered saline (without  $Mg^{2+}$  and  $Ca^{2+}$ ), pH 7.4, 150mM NaCl, 0.02% sodium azide and 50% glycerol.

## Storage

Store at 4°C short term. Store at -20°C long term. Avoid freeze / thaw cycle.

## Clonality

Polyclonal

## Ig Type

IgG

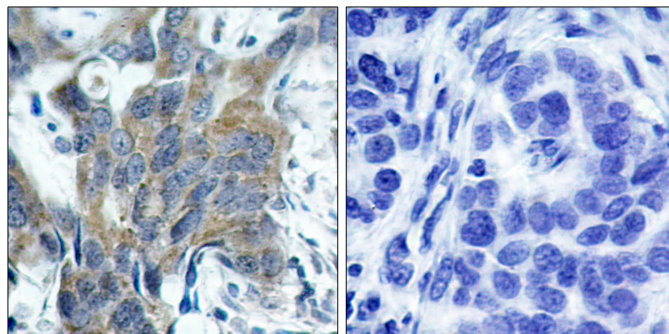
## Applications

WB, IHC-P, ICC/IF

## Dilutions

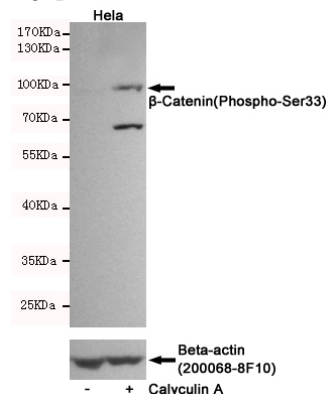
WB:1/500-1/1000 IHC:1/50-1/100

## Validations

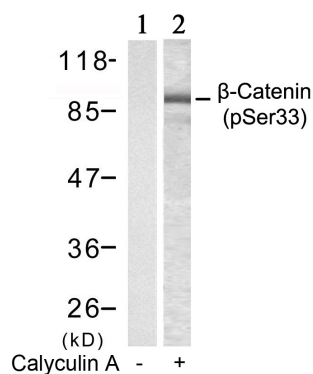


Immunohistochemical analysis of paraffin-embedded human breast carcinoma tissue using u03b2-Catenin (Phospho-Ser33) Antibody (left) or the same antibody preincubated with blocking

peptide (right).



Western blot detection of u03b2-Catenin(Phospho-Ser33) in HeLa cells untreated or Calyculin A-treated, using u03b2-Catenin(Phospho-Ser33) Rabbit pAb (dilution 1:1000, upper) or u03b2-Actin Mouse mAb (200068-8F10, lower). Predicted band size:92kDa. Observed band size:92kDa.



Western blot analysis of extracts from MCF-7 cells untreated or treated with Calyculin A using u03b2-Catenin (Phospho-Ser33) Antibody .