

Anti-SOD2 Rabbit antibody

Catalog Number: 167131

Product name

Anti-SOD2 Rabbit antibody

Specificity

Human, Mouse, Rat, Monkey

Antibody description

SOD2 Rabbit polyclonal antibody

Preparation

Antigen: Synthetic peptide.

Formulation

Purified Rabbit polyclonal antibody in PBS(pH 7.4) containing with 0.03% Proclin300 and 50% glycerol.

Storage

Store at 4°C short term. Store at -20°C long term.
Avoid freeze / thaw cycle.

Clonality

Polyclonal

Ig Type

Rabbit IgG

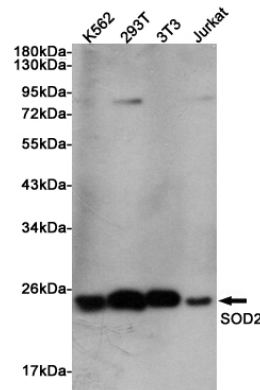
Applications

WB

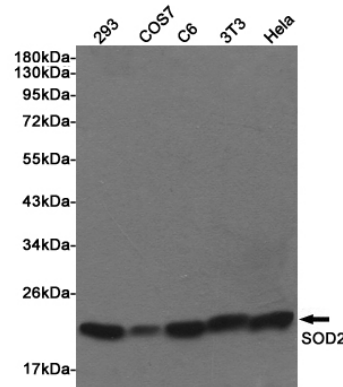
Dilutions

WB: 1/1000

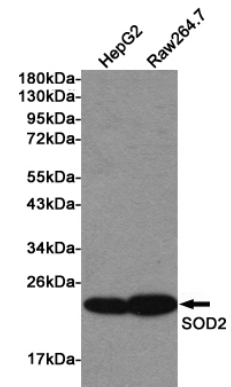
Validations



Western blot detection of SOD2 in K562, 293T, 3T3 and Jurkat lysates using SOD2 Rabbit pAb (1:1000 diluted). Predicted band size: 25KDa. Observed band size:22KDa.



Western blot detection of SOD2 in 293, COS7, C6, 3T3 and HeLa lysates using SOD2 Rabbit pAb (1:1000 diluted). Predicted band size: 25KDa.



Observed band size:22KDa.

Western blot detection of SOD2 in HepG2 and Raw264.7 lysates using SOD2 Rabbit pAb (1:1000 diluted). Predicted band size: 25KDa. Observed band size:22KDa.