

Anti-Phospho-CDK2 (Thr160) Rabbit antibody



Catalog Number: 167125

General Information

Product name:

Anti-Phospho-CDK2 (Thr160) Rabbit antibody

Immunogen:

Applications:

WB, IHC-P

Specificity:

Human, Mouse, Rat

Antibody description:

Phospho-CDK2 (Thr160) Rabbit polyclonal antibody

Properties

Preparation:

Antigen: Peptide sequence around phosphorylation site of threonine 160 (T-Y-T(p)-H-E) derived from Human CDK2.

Formulation:

Supplied at 1.0mg/mL in phosphate buffered saline (without Mg²⁺ and Ca²⁺), pH 7.4, 150mM NaCl, 0.02% sodium azide and 50% glycerol.

Storage:

Store at 4°C short term. Store at -20°C long term. Avoid freeze / thaw cycle.

Clonality:

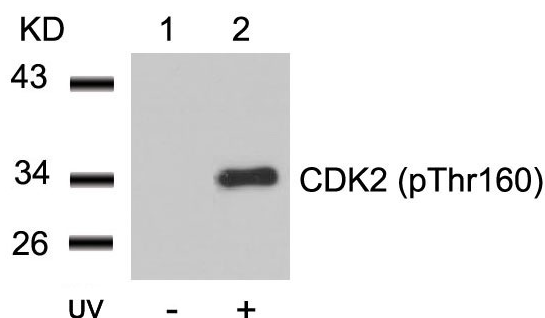
Polyclonal antibody

Ig Type: IgG

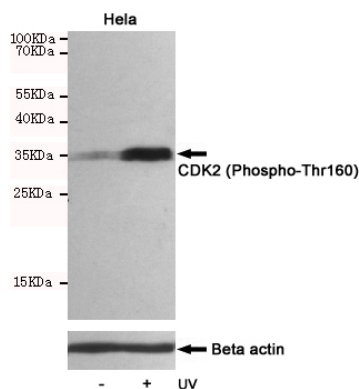
Applications

WB: 1/500-1/1000 IHC: 1/50-1/100

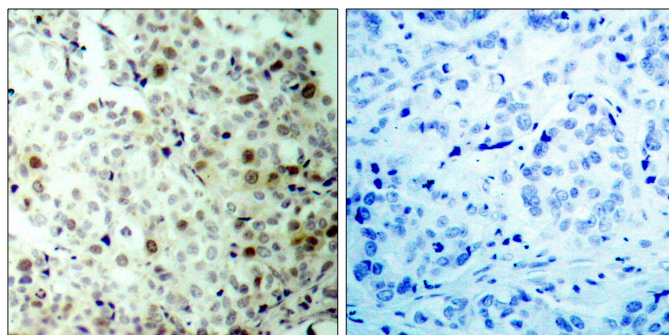
Validations



Western blot analysis of extracts from HeLa cells untreated (lane 1) or treated with UV (lane 2) using CDK2 (Phospho-Thr160) Antibody .



Western blot analysis of extracts from HeLa cells, untreated or treated with UV, using CDK2 (Phospho-Thr160) Rabbit pAb (167125, 1:500 diluted, upper) or Beta actin Mouse mAb (200068-8F10, lower).



Anti-Phospho-CDK2 (Thr160) Rabbit antibody



Catalog Number: 167125

Immunohistochemical analysis of paraffin-embedded human breast carcinoma tissue using CDK2 (Phospho-Thr160) Antibody (left) or the

same antibody preincubated with blocking peptide (right).