

Anti-Phospho-SMC1A (Ser957) Rabbit antibody



Catalog Number: 167124

Product name

Anti-Phospho-SMC1A (Ser957) Rabbit antibody

Specificity

Human, Mouse

Antibody description

Phospho-SMC1A (Ser957) Rabbit polyclonal antibody

Preparation

Antigen: Peptide sequence around phosphorylation site of serine 957 (G-S-S(p)-Q-G) derived from Human SMC1.

Formulation

Supplied at 1.0mg/mL in phosphate buffered saline (without Mg²⁺ and Ca²⁺), pH 7.4, 150mM NaCl, 0.02% sodium azide and 50% glycerol.

Storage

Store at 4°C short term. Store at -20°C long term. Avoid freeze / thaw cycle.

Clonality

Polyclonal

Ig Type

Rabbit IgG

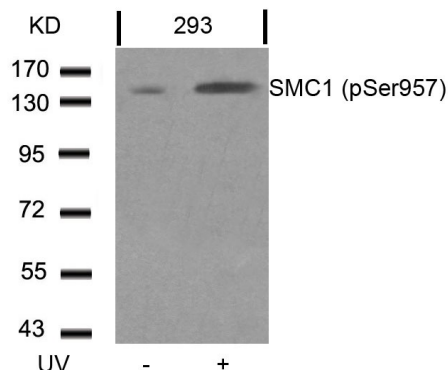
Applications

WB, IHC-P

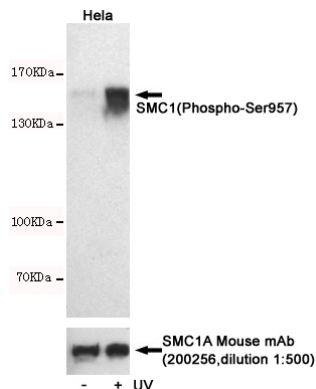
Dilutions

WB:1/500-1/1000 IHC:1/50-1/100

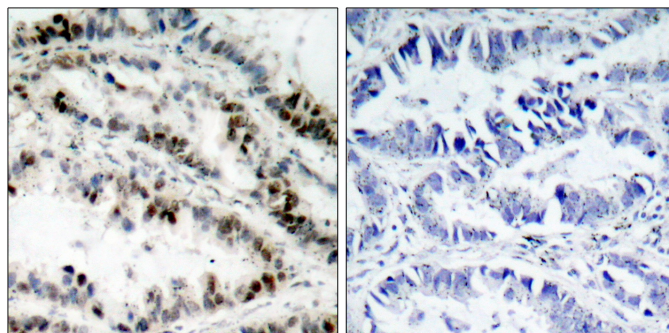
Validations



Western blot analysis of extracts from 293 cells untreated or treated with UV using SMC1 (Phospho-Ser957) Antibody .



Western blot detection of SMC1(Phospho-Ser957) in HeLa cells untreated or treated with UV using SMC1(Phospho-Ser957) Rabbit pAb (dilution 1:500, upper) or SMC1A Mouse mAb (200256, dilution 1:500, lower). Predicted band size:145kDa. Observed band size:145kDa.



Immunohistochemical analysis of paraffin-embedded human lung carcinoma tissue using SMC1 (Phospho-Ser957) Antibody (left) or the same antibody preincubated with blocking peptide (right).