

Anti-Phospho-IRE1 (Ser724) Rabbit antibody



Catalog Number: 167112

Product name

Polyclonal

Anti-Phospho-IRE1 (Ser724) Rabbit antibody

Ig Type

Rabbit IgG

Specificity

Human

Applications

WB

Antibody description

Phospho-IRE1 (Ser724) Rabbit polyclonal antibody

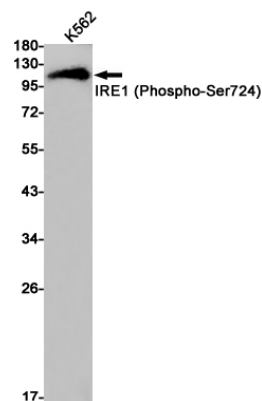
Dilutions

WB: 1/1000-1/5000

Preparation

Antigen: A synthetic phosphopeptide corresponding to residues surrounding Ser724 of human IRE1

Validations



Formulation

Supplied in 50nM Tris-Glycine(pH 7.4), 0.15M NaCl, 40%Glycerol, 0.01% sodium azide and 0.05% BSA.

Storage

Store at -20°C. Stable for 12 months from date of receipt.

Western blot detection of IRE1 (Phospho-Ser724) in K562 cell lysates using IRE1 (Phospho-Ser724) Rabbit pAb(1:1000 diluted).Predicted band size:110kDa.Observed band size:110kDa.

Clonality