

# Anti-Phospho-IKB alpha (Ser32/Ser36) Rabbit antibody



Catalog Number: 167105

## Product name

Anti-Phospho-IKB alpha (Ser32/Ser36) Rabbit antibody

## Specificity

Human, Mouse, Rat, Monkey

## Antibody description

Phospho-IKB alpha (Ser32/Ser36) Rabbit polyclonal antibody

## Preparation

Antigen: The antiserum was produced against synthesized peptide derived from human I $\kappa$ B $\alpha$  around the phosphorylation site of Ser32/Ser36. AA range:15-64

## Formulation

Liquid in PBS containing 50% glycerol, 0.5% BSA and 0.02% sodium azide.

## Storage

Store at 4°C short term. Store at -20°C long term. Avoid freeze / thaw cycle.

## Clonality

Polyclonal

## Ig Type

Rabbit IgG

## Applications

WB, IHC-P, ICC/IF, ELISA

## Dilutions

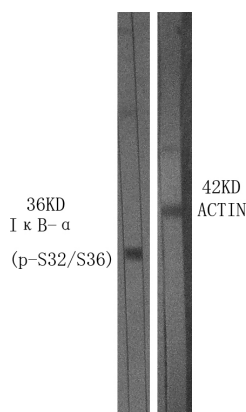
WB: 1/500 - 1/2000

IHC: 1/100 - 1/300

IF: 1/200 - 1/1000

ELISA: 1/10000

## Validations



Western Blot analysis of various cells using Phospho-Iu03baB-u03b1 (S32/S36) Polyclonal Antibody