

Anti-Glucose Transporter GLUT1 Rabbit antibody



Catalog Number: 167102

Product name

Anti-Glucose Transporter GLUT1 Rabbit antibody

Specificity

Human, Mouse, Rat

Antibody description

Glucose Transporter GLUT1 Rabbit polyclonal antibody

Preparation

Antigen: A synthesized peptide derived from human Glucose Transporter GLUT1

Formulation

Rabbit IgG in phosphate buffered saline , pH 7.4, 150mM NaCl, 0.02% sodium azide and 50% glycerol.

Storage

Store at 4°C short term. Store at -20°C long term. Avoid freeze / thaw cycle.

Clonality

Polyclonal

Ig Type

Rabbit IgG

Applications

WB, IHC-P, ICC/IF, FC

Dilutions

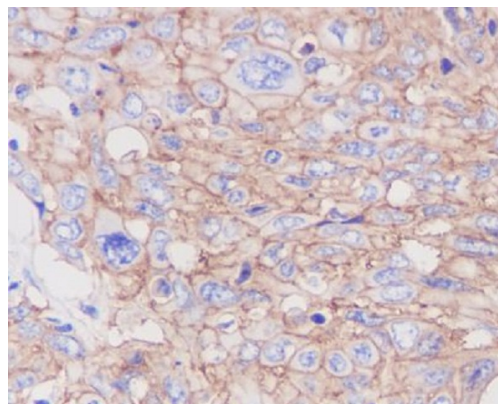
WB: 1/500-1/2000

IHC: 1/50-1/200

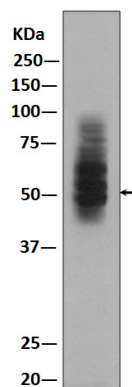
ICC/IF: 1/50-1/200

FC: 1/50

Validations

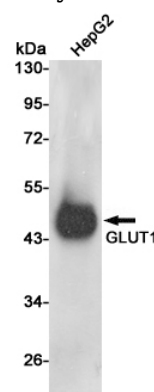


Immunohistochemical analysis of paraffin-embedded human cervix cancer, using GLUT1



Antibody.

Western blot analysis of GLUT1 expression in



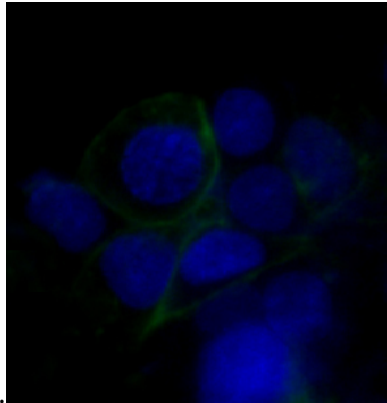
HepG2 lysate.

Western blot analysis of GLUT1 expression in HepG2 cell lysates using GLUT1 antibody at 1/500 dilution. Predicted band size: 54 kDa. Observed

Anti-Glucose Transporter GLUT1 Rabbit antibody



Catalog Number: 167102



Immunofluorescent analysis of HepG2 cells, using GLUT1 Antibody .

band size:45-60KDa.