

Anti-PARP1 Rabbit antibody



Catalog Number: 167101

Product name

Anti-PARP1 Rabbit antibody

Specificity

Human, Mouse, Rat

Antibody description

PARP1 Rabbit polyclonal antibody

Preparation

Antigen: A synthesized peptide derived from human PARP

Formulation

Rabbit IgG in phosphate buffered saline , pH 7.4, 150mM NaCl, 0.02% sodium azide and 50% glycerol.

Storage

Store at 4°C short term. Store at -20°C long term. Avoid freeze / thaw cycle.

Clonality

Polyclonal

Ig Type

Rabbit IgG

Applications

WB, IHC-P, ICC/IF, FC

Dilutions

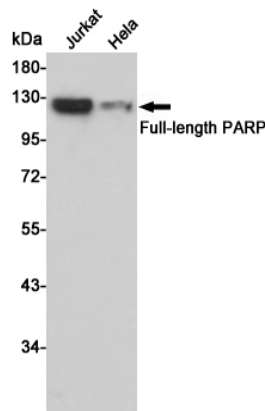
WB: 1/500-1/2000

IHC: 1/50-1/200

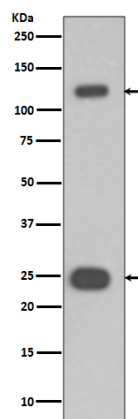
ICC/IF: 1/50-1/200

FC: 1/50

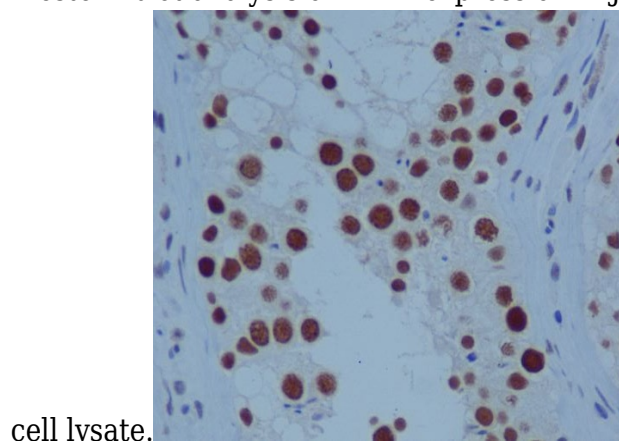
Validations



Western blot analysis of PARP expression in Jurkat and HeLa cell lysates using PARP antibody at 1/1000 dilution. Predicted band size: 113 kDa. Observed band size: 113 kDa.



Western blot analysis of PARP expression in Jurkat



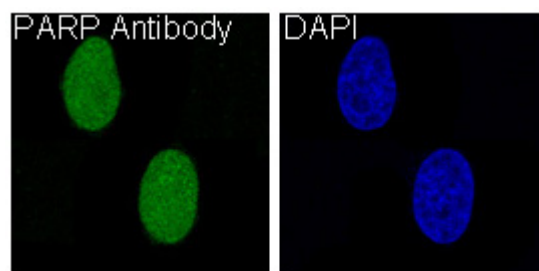
cell lysate.

Immunohistochemical analysis of paraffin-embedded human testis, using PARP Antibody.

Anti-PARP1 Rabbit antibody



Catalog Number: 167101



Immunofluorescent analysis of HeLa cells, using PARP Antibody .