

# Anti-PGK1 Rabbit antibody



Catalog Number: 167100

## Product name

Anti-PGK1 Rabbit antibody

## Specificity

Human, Mouse, Rat

## Antibody description

PGK1 Rabbit polyclonal antibody

## Preparation

Antigen: A synthesized peptide derived from human PGK1

## Formulation

Rabbit IgG in phosphate buffered saline , pH 7.4, 150mM NaCl, 0.02% sodium azide and 50% glycerol.

## Storage

Store at 4°C short term. Store at -20°C long term. Avoid freeze / thaw cycle.

## Clonality

Polyclonal

## Ig Type

Rabbit IgG

## Applications

WB, ICC/IF, FC

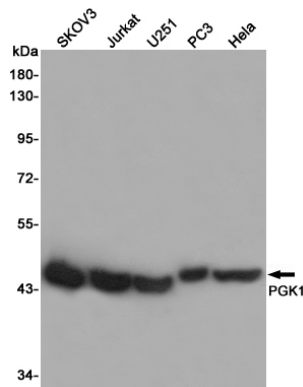
## Dilutions

WB: 1/500-1/2000

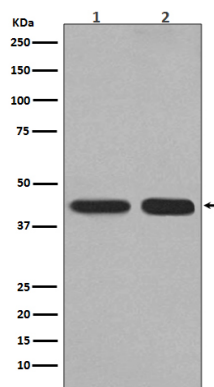
ICC/IF: 1/50-1/200

FC: 1/50

## Validations



Western blot analysis of PGK1 expression in SKOV3, Jurkat, U251, PC3 and HeLa cell lysates using PGK1 antibody at 1/1000 dilution. Predicted band size: 44 kDa. Observed band size: 44 kDa.



Western blot analysis of PGK1 expression in (1) HepG2 cell lysate; (2) Mouse kidney lysate.