

Anti-PKC gamma Rabbit antibody



Catalog Number: 167094

Product name

Anti-PKC gamma Rabbit antibody

Ig Type

Rabbit IgG

Specificity

Human, Mouse, Rat

Applications

WB, IP

Antibody description

PKC gamma Rabbit polyclonal antibody

Dilutions

WB: 1/1000

Preparation

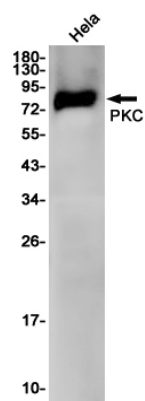
Antigen: Recombinant protein of human PKC

IP: 1/20

Formulation

Supplied in 50nM Tris-Glycine(pH 7.4), 0.15M NaCl, 40%Glycerol, 0.01% sodium azide and 0.05% BSA.

Validations



Storage

Store at -20°C. Stable for 12 months from date of receipt.

Western blot detection of PKC in HeLa cell lysates using PKC Rabbit pAb(1:1000 diluted).Predicted band size:78KDa.Observed band size:78KDa.

Clonality

Polyclonal